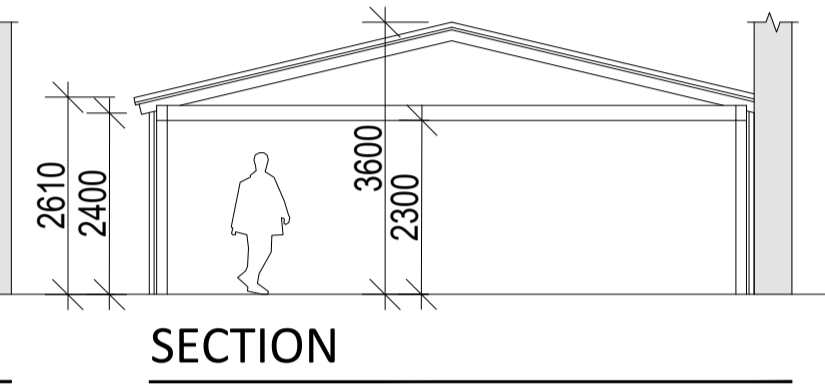
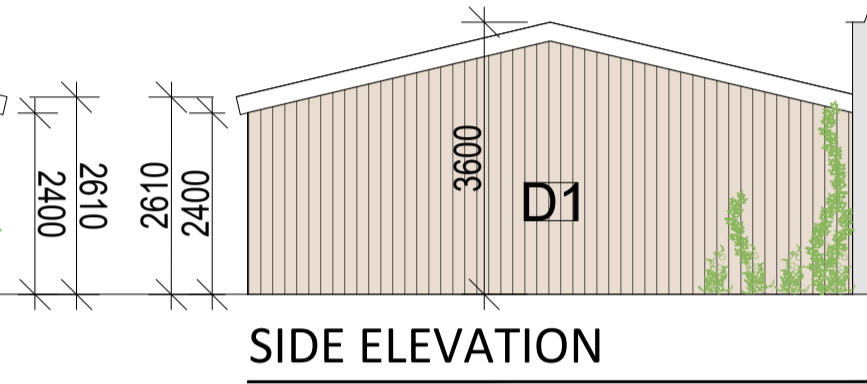
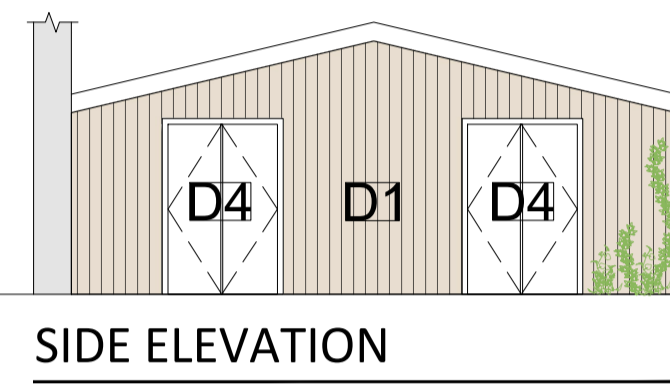
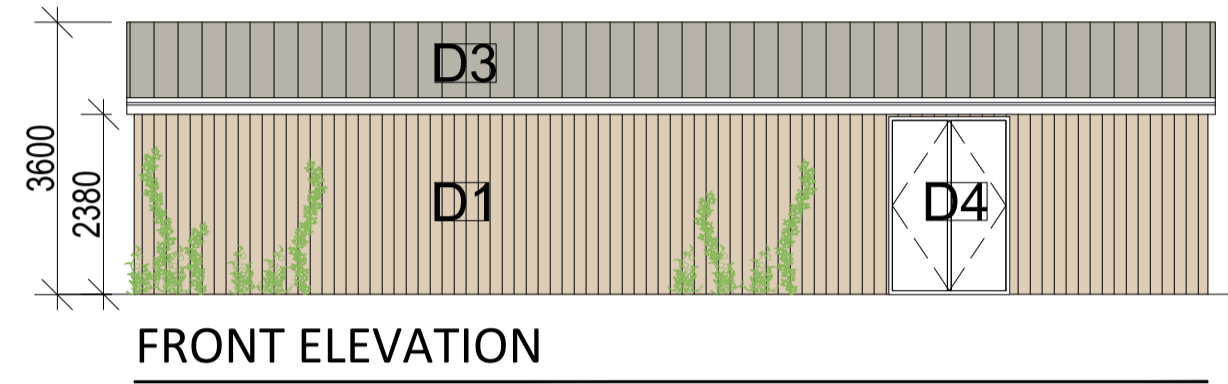
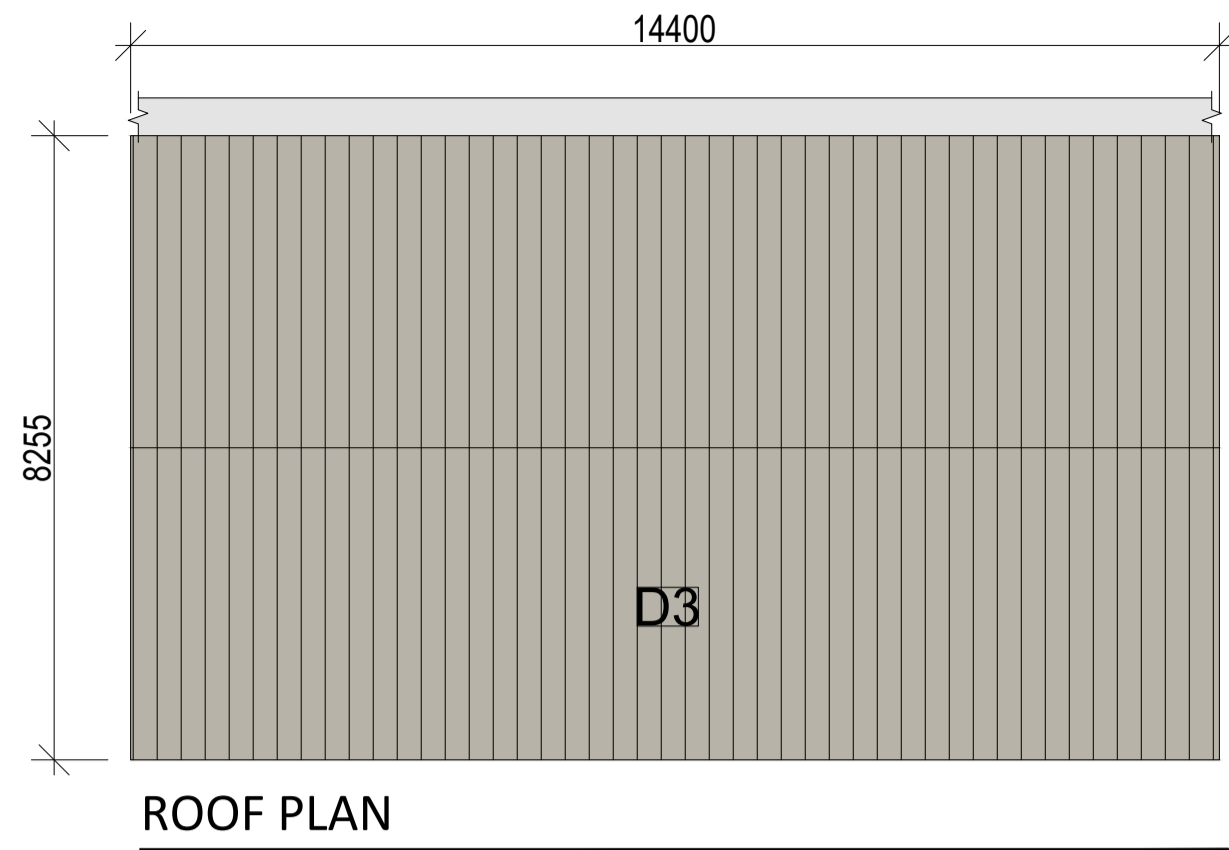
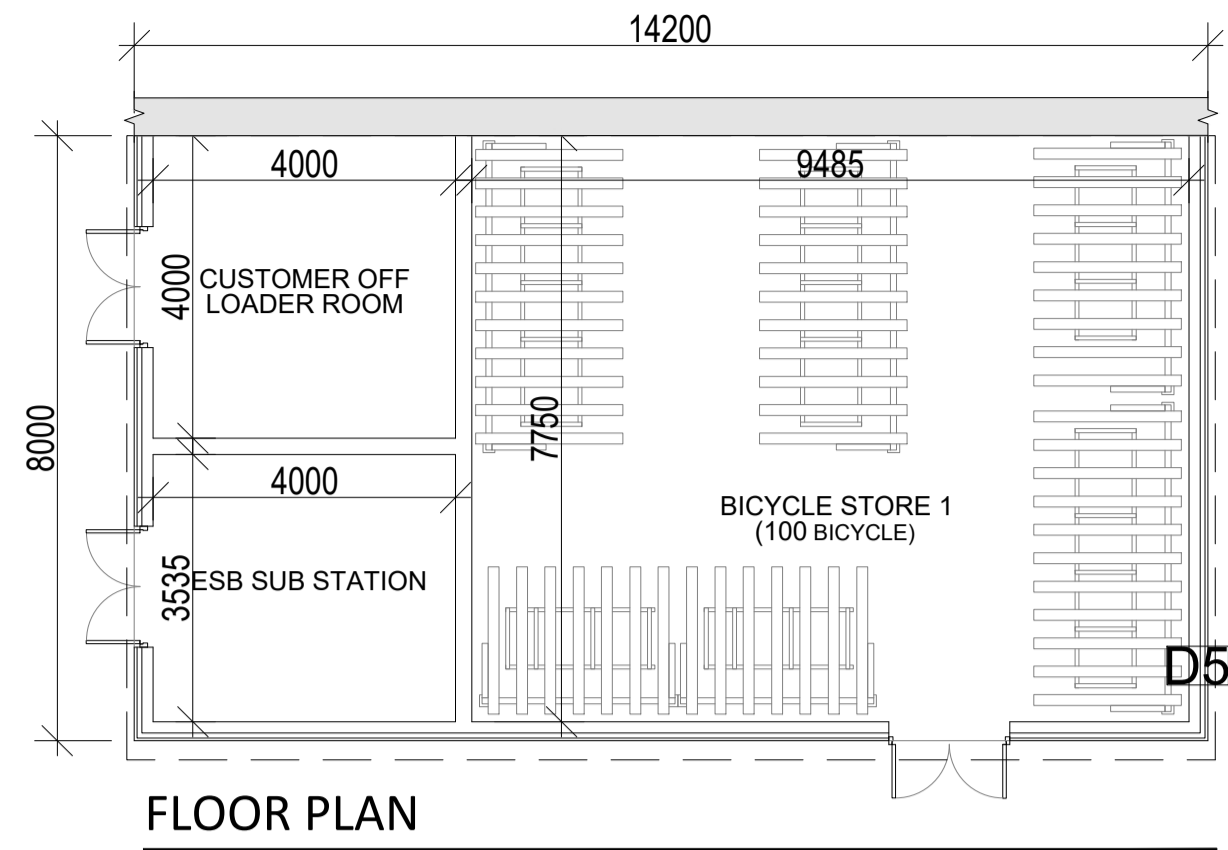
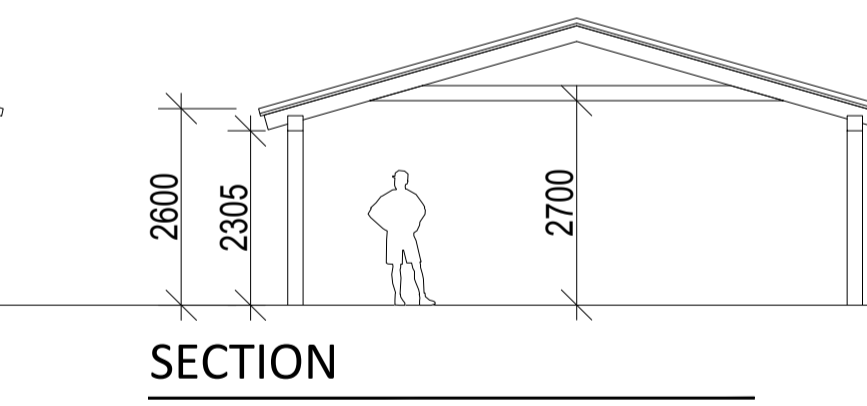
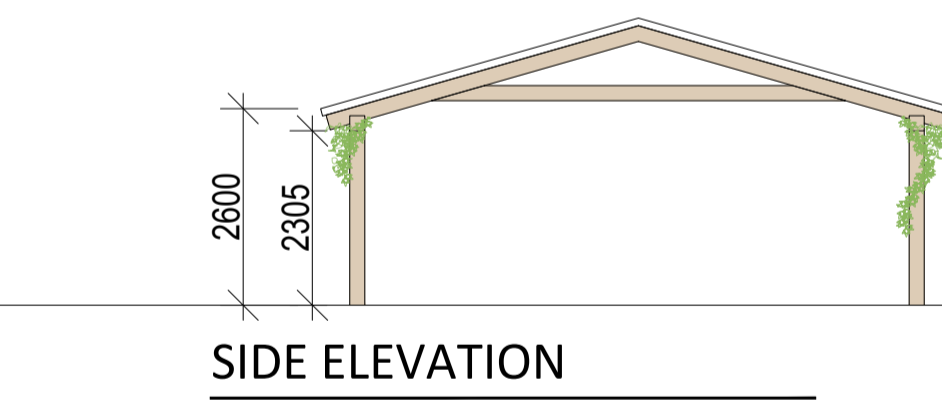
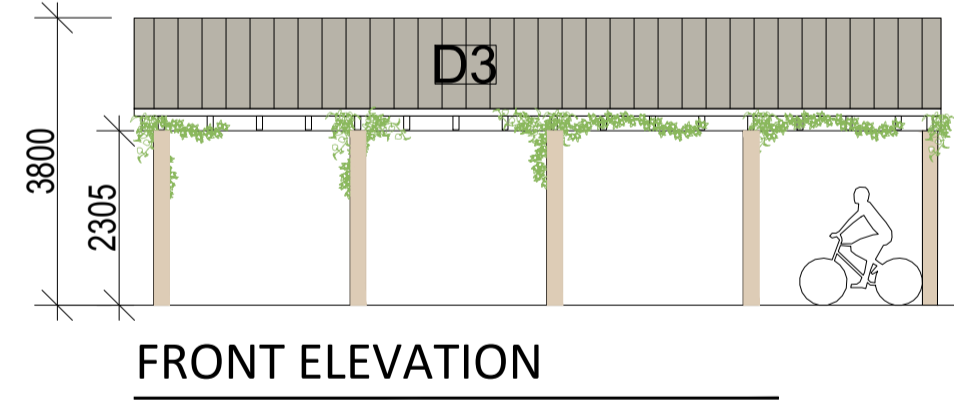
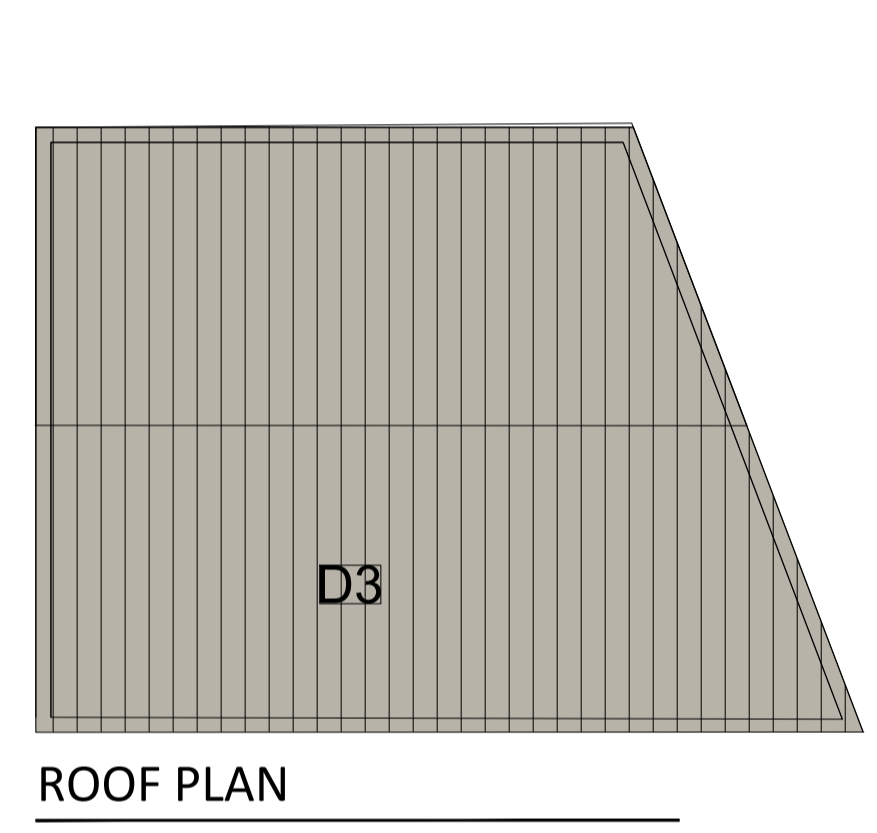
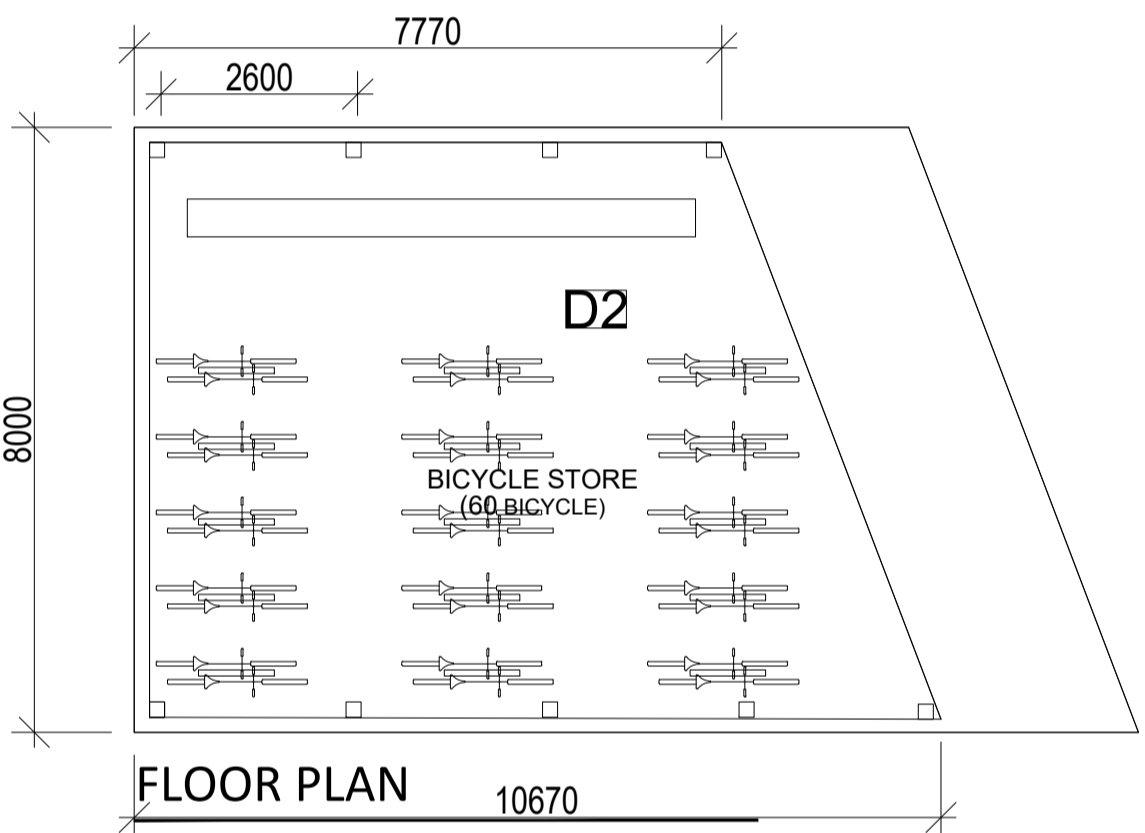


PAVILION TYPE 1



PAVILION TYPE 2



PAVILION TYPE 3

General Notes
 Do not scale from drawings (excluding CAD files).
 All dimensions must be verified on site. No use, disclosure, dissemination or duplication of any content in this document is allowed without prior consent by PCOT Architects. This drawing may not be edited or modified by the recipient.

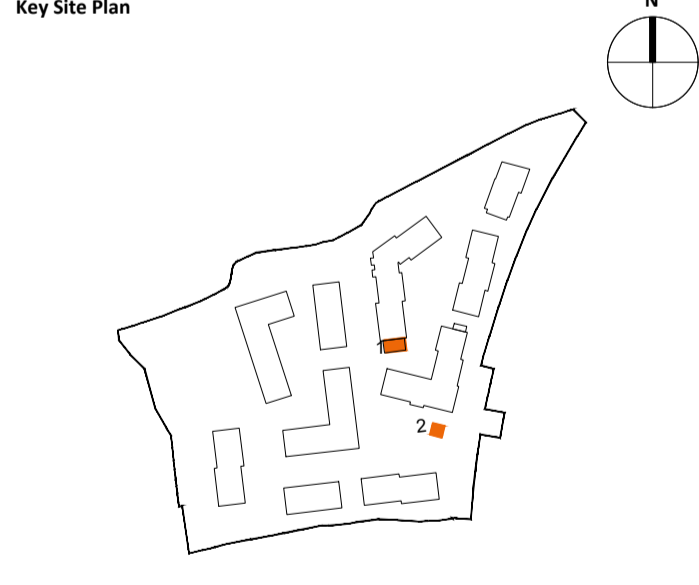
A1

NOTES:
 FACADE FINISHES:
 D1: TIMBER LAMELLAS CLADDING, NATURAL FINISH
 D2: TIMBER STUD, NATURAL FINISH
 D3: ASH GREY METAL STANDING SEAM ROOF IN PPC FINISH (RAL 7044)
 D4: ALUMINIUM DOOR SYSTEM WITH ASH GREY FRAMES (RAL 7044)
 D5: LOAD-BEARING BLOCK STRUCTURE WITH TIMBER CLADDING FINISH

Date	Rev.	Revision Description	CH
			K

Project Title
 Fosterstown North SHD

Address
 Lands known as Fosterstown North, Dublin Road / R132
 Swords, Co. Dublin



Client
 J. Murphy (Developments) Limited

Lead Architect
 PCOT Architects
 57 Merrion Square North, Dublin 2, D02 CP02
 087 9653495
 info@pcotarchitects.ie

Public Realm Architect
 ARROW Architects ApS
 25 Lower Leeson Street, Dublin 2, D02 XD77
 +45 4226 2860
 info@arrowarchitects.com www.arrowarchitects.com

Project Phase
 PLANNING SUBMISSION

Sheet Name
 BIN & BICYCLE STORAGE PAVILIONS

DWG NO.
 FOS-ARW-A-00-DR-A-00-2012

Status
 PLANNING

Rev.	P00
Date	03-2022
Scale	1 : 100 @A1